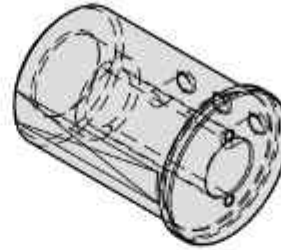
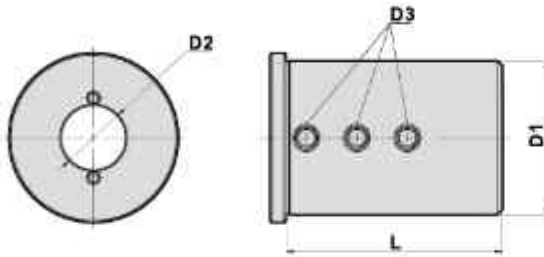
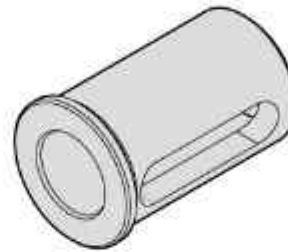
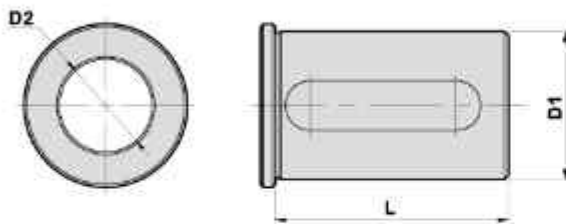


### REDUCING SLEEVE 固定刀座-刀套



#### RS-W

- For boring bar holder
- External coolant supply



#### RS

- For boring bar holde

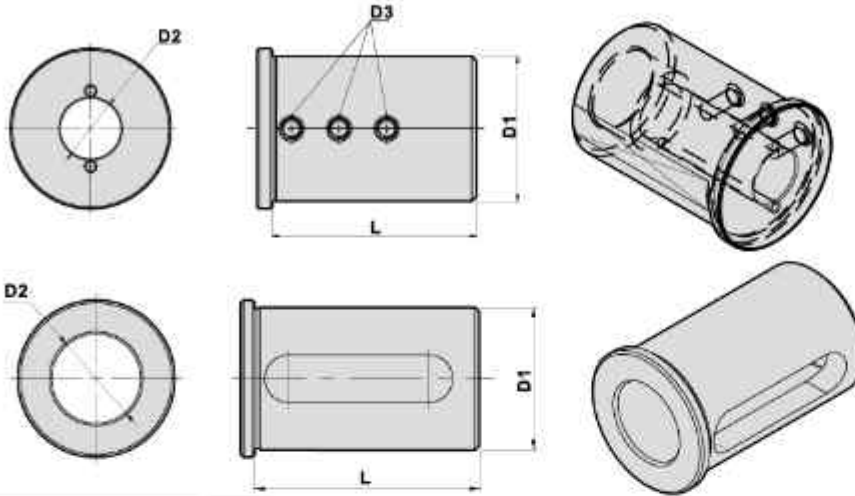
### DIMENSIONS

D1	D2	D3	L	Code No.	Order No.	FIG	(Kg)Weight		
20	6	Thread	40	A20061-000	E20-6	1	0.10		
	8			A20081-000	E20-8		0.10		
	10			A20101-000	E20-10		0.09		
	12			A20122-000	E20-12		0.07		
	16			-	2		0.04		
25	6	Thread	50	A25061-000	E25-6	1	0.18		
	8			A25081-000	E25-8		0.18		
	10			A25101-000	E25-10		0.16		
	12			A25121-000	E25-12		0.15		
	16	-		2	0.12				
	20	A25162-000			E25-16	0.08			
	A25202-000	E25-20			0.08				
32	6	Thread	60	A32061-000	E32-6	1	0.35		
	8			A32081-000	E32-8		0.35		
	10			A32101-000	E32-10		0.34		
	12			A32121-000	E32-12		0.33		
	16			A32162-000	E32-16		0.28		
	20	A32202-000		E32-20	0.23				
	25	A32252-000		E32-25	0.16				
	40	6		Thread	70	A40061-000	E40-6	1	0.64
		8				A40081-000	E40-8		0.61
10		A40101-000	E40-10			0.59			
12		A40121-000	E40-12			0.55			
16		A40162-000	E40-16			0.56			
20		A40202-000	E40-20	0.51					
25		A40252-000	E40-25	0.42					
32		A40322-000	E40-32	0.26					
50		8	Thread	80		A50081-000	E50-8	1	1.20
		10				A50101-000	E50-10		1.10
	12	A50121-000			E50-12	1.10			
	16	A50161-000			E50-16	1.10			
	20	A50201-000			E50-20	1.00			
	25	A50251-000	E50-25		0.90				
	32	A50322-000	E50-32		0.71				
	40	A50402-000	E50-40		0.44				
	60	12	Thread		107	A60121-000	E60-12	1	2.30
		16				A60161-000	E60-16		2.20
20		A60201-000		E60-20		2.10			
25		A60251-000		E60-25		1.90			
32		A60321-000		E60-32		1.70			
40		A60402-000	E60-40	1.30					
50		A60502-000	E60-50	0.76					

TYPE

RS

### REDUCING SLEEVE 固定刀座-刀套



#### RS-W

- For boring bar holder
- External coolant supply

#### RS

- For boring bar holder

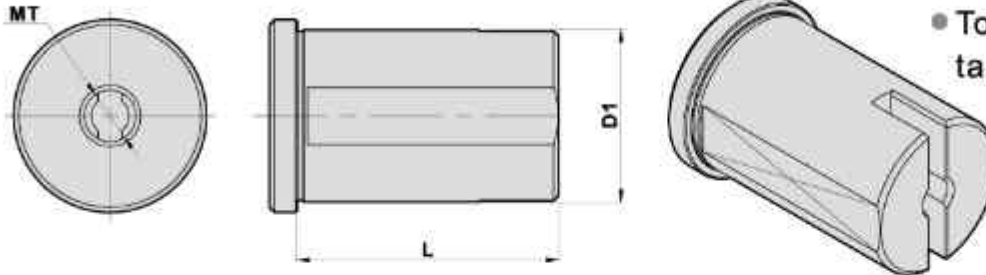
#### DIMENSIONS

D1	D2	D3	L	Code No.	Order No.	FIG	(Kg)Weight
3/4"	1/4"	Thread	40	AE1X11-000	E3/4"-1/4"	1	0.10
	5/16"			AE1A11-000	E3/4"-5/16"		0.10
	3/8"			AE1B11-000	E3/4"-3/8"		0.09
	1/2"			AE1C12-000	E3/4"-1/2"	2	0.07
	5/8"			AE1D12-000	E3/4"-5/8"		0.05
1"	1/4"	Thread	50	AF1X11-000	E1"-1/4"	1	0.19
	5/16"			AF1A11-000	E1"-5/16"		0.19
	3/8"			AF1B11-000	E1"-3/8"		0.19
	1/2"			AF1C11-000	E1"-1/2"	2	0.16
	5/8"			AF1D12-000	E1"-5/8"		0.13
	3/4"			AF1E12-000	E1"-3/4"		0.09
	1"			AG1F12-000	E1"-1/4"-1"		0.14
1-1/4"	1/4"	Thread	60	AG1X11-000	E1-1/4"-1/4"	1	0.36
	5/16"			AG1A11-000	E1-1/4"-5/16"		0.36
	3/8"			AG1B11-000	E1-1/4"-3/8"		0.32
	1/2"			AG1C11-000	E1-1/4"-1/2"	2	0.31
	5/8"			AG1D12-000	E1-1/4"-5/8"		0.28
	3/4"			AG1E12-000	E1-1/4"-3/4"		0.24
	1"			AG1F12-000	E1-1/4"-1"		0.14
1-1/2"	1/4"	Thread	70	AH1X11-000	E1-1/2"-1/4"	1	0.61
	5/16"			AH1A11-000	E1-1/2"-5/16"		0.59
	3/8"			AH1B11-000	E1-1/2"-3/8"		0.58
	1/2"			AH1C11-000	E1-1/2"-1/2"	2	0.56
	5/8"			AH1D12-000	E1-1/2"-5/8"		0.55
	3/4"			AH1E12-000	E1-1/2"-3/4"		0.50
	1"			AH1F12-000	E1-1/2"-1"		0.45
2"	1-1/4"	Thread	80	AH1G12-000	E1-1/2"-1-1/4"	1	0.21
	5/16"			A11A11-000	E2"-5/16"		1.30
	3/8"			A11B11-000	E2"-3/8"		1.20
	1/2"			A11C11-000	E2"-1/2"	2	1.20
	5/8"			A11D11-000	E2"-5/8"		1.10
	3/4"			A11E11-000	E2"-3/4"		1.10
	1"			A11F11-000	E2"-1"		1.00
2-1/2"	1-1/4"	Thread	107	A11G12-000	E2"-1-1/4"	1	0.80
	1-1/2"			A11H12-000	E2"-1-1/2"		0.60
	1/2"			AJ1C11-000	E2-1/2"-1/2"		2
	5/8"			AJ1D11-000	E2-1/2"-5/8"	2.50	
	3/4"			AJ1E11-000	E2-1/2"-3/4"	2.40	
	1"			AJ1F11-000	E2-1/2"-1"	2.20	
	3"			1-1/4"	Thread	107	AJ1G11-000
1-1/2"		AJ1H12-000	E2-1/2"-1-1/2"	1.80			
2"		AJ1I12-000	E2-1/2"-2"	1.10			
1/2"		AL1C11-000	E3"-1/2"	2			3.80
5/8"		AL1D11-000	E3"-5/8"				3.80
3/4"		AL1E11-000	E3"-3/4"				3.70
1"		AL1F11-000	E3"-1"				3.50
3"	1-1/4"	Thread	107	AL1G11-000	E3"-1-1/4"	1	3.20
	1-1/2"			AL1H11-000	E3"-1-1/2"		3.00
	2"			AK1I12-000	E3"-2"		2.20
	2-1/2"			AK1J12-000	E3"-2-1/2"	2	1.30
	2-1/2"						

## REDUCING SLEEVE 固定刀座-刀套

### RS-MT

- Tool holders with morse taper according to DIN 228



### DIMENSIONS

(mm)

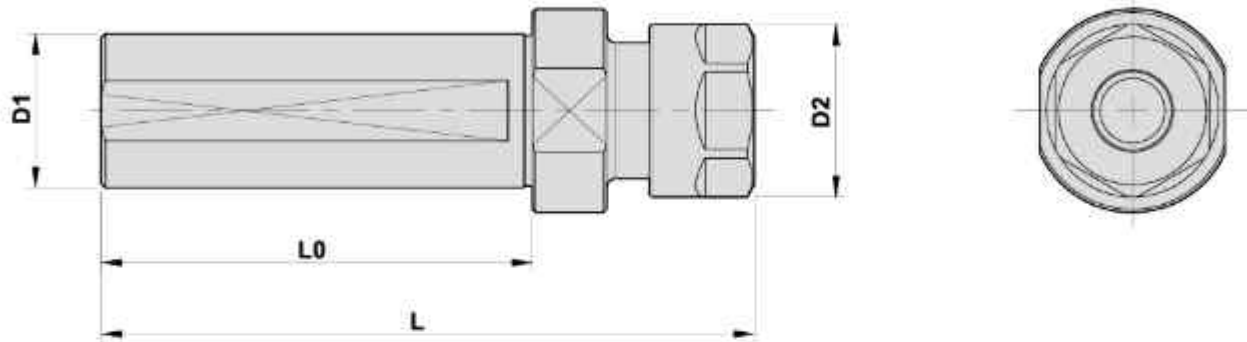
D1	L	MT	Code No.	Order No.	(Kg)Weight
25	50	MT1	A25MT1-000	E25-MT1	0.22
	50	MT2	A25MT2-000	E25-MT2	0.19
32	60	MT1	A32MT1-000	E32-MT1	0.42
	60	MT2	A32MT2-000	E32-MT2	0.40
	60	MT3	A32MT3-000	E32-MT3	0.41
	60	MT4	A32MT4-000	E32-MT4	0.68
40	70	MT1	A40MT1-000	E40-MT1	0.72
	70	MT2	A40MT2-000	E40-MT2	0.66
	70	MT3	A40MT3-000	E40-MT3	0.74
	70	MT4	A40MT4-000	E40-MT4	0.68
50	76	MT2	A50MT2-000	E50-MT2	1.40
	97	MT3	A50MT3-000	E50-MT3	1.50
	107	MT4	A50MT4-000	E50-MT4	1.60
	125	MT5	A50MT5-000	E50-MT5	0.95
60	76	MT2	A60MT2-000	E60-MT2	1.90
	97	MT3	A60MT3-000	E60-MT3	2.20
	107	MT4	A60MT4-000	E60-MT4	2.30
	125	MT5	A60MT5-000	E60-MT5	2.10

### DIMENSIONS

(inch)

D1	L	MT	Code No.	Order No.	(Kg)Weight
1"	50mm	MT1	AF1MT1-000	E1"-MT1	0.22
	50mm	MT2	AF1MT2-000	E1"-MT2	0.19
1-1/4"	60mm	MT1	AG1MT1-000	E1-1/4"-MT1	0.42
	60mm	MT2	AG1MT2-000	E1-1/4"-MT2	0.40
	60mm	MT3	AG1MT3-000	E1-1/4"-MT3	0.41
1-1/2"	70mm	MT1	AH1MT1-000	E1-1/2"-MT1	0.72
	70mm	MT2	AH1MT2-000	E1-1/2"-MT2	0.66
	70mm	MT3	AH1MT3-000	E1-1/2"-MT3	0.74
	70mm	MT4	AH1MT4-000	E1-1/2"-MT4	0.68
2"	76mm	MT2	AI1MT2-000	E2"-MT2	1.40
	97mm	MT3	AI1MT3-000	E2"-MT3	1.50
	107mm	MT4	AI1MT4-000	E2"-MT4	1.60
	125mm	MT5	AI1MT5-000	E2"-MT5	0.95
3"	76mm	MT2	AK1MT2-000	E3"-MT2	1.90
	97mm	MT3	AK1MT3-000	E3"-MT3	2.20
	107mm	MT4	AK1MT4-000	E3"-MT4	2.30
	125mm	MT5	AK1MT5-000	E3"-MT5	2.10

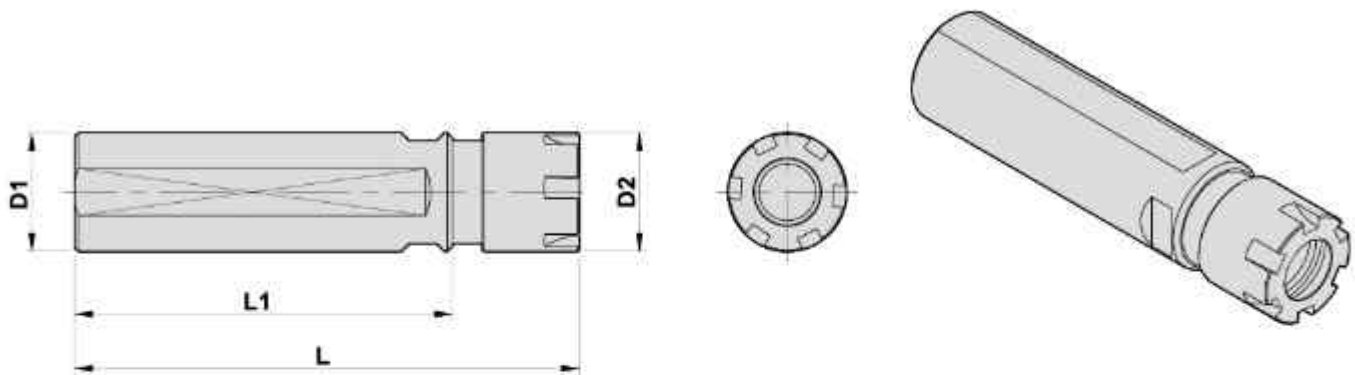
**SIDE LOCK STRAIGHT SHANK ER COLLET CHUCKS - SL SHANK**  
直柄側鎖式ER彈性筒夾刀柄-SL柄



**DIMENSIONS**

D1	D2	L0	L	Code No.	Order No.
16	19	70	85.5	616004-000	SL16-ER11-70
20	30	70	109.5	605022-000	SL20-ER16-70
	30	100	139.5	605023-000	SL20-ER16-100
	30	120	159.5	605024-000	SL20-ER16-120
	34	80	125.5	605025-000	SL20-ER20-80
	34	100	145.5	605026-000	SL20-ER20-100
	34	120	165.5	605027-000	SL20-ER20-120
25	34	80	122	606011-000	SL25-ER20-80
	42	70	122	606012-000	SL25-ER25-70
	42	80	132	606013-000	SL25-ER25-80
32	34	80	122	607001-000	SL32-ER20-80
	42	70	117	607002-000	SL32-ER25-70
	42	80	127	607003-000	SL32-ER25-80
	50	80	138	607004-000	SL32-ER32-80
	50	130	188	607005-000	SL32-ER32-130
	63	70	137	607006-000	SL32-ER40-70
40	42	80	132	608001-000	SL40-ER25-80
	50	80	131	608002-000	SL40-ER32-80
	50	135	193	608003-000	SL40-ER32-135
	63	80	147	608004-000	SL40-ER40-80

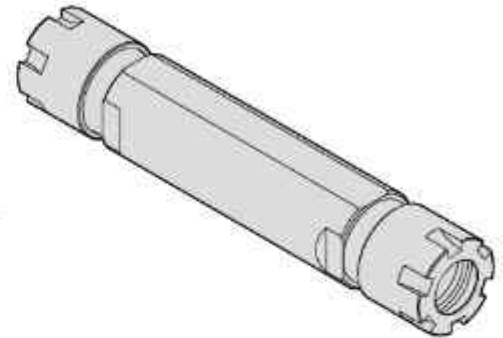
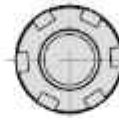
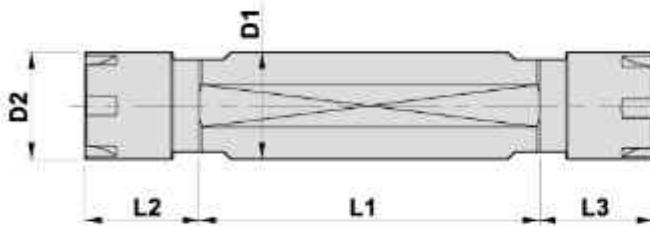
**SIDE LOCK STRAIGHT SHANK ER COLLET CHUCKS - SL SHANK**  
直柄側鎖式ER彈性筒夾刀柄-SL柄



**DIMENSIONS**

D1	D2	L1	L	Code No.	Order No.
16	19	45	61	616001-000	SL16-ER11-45L
	17	35	53	616005-000	SL16-ER11M-35L
19.05	19	70	86	6E1202-000	SL19.05-ER11-70L
	22	40	64	6E1205-000	SL19.05-ER16M-40L
	22	70	94	6E1204-000	SL19.05-ER16M-70L
	22	105	129	6E1206-000	SL19.05-ER16M-105L
	22	122	146	6E1203-000	SL19.05-ER16M-122L
20	19	40	56	605005-000	SL20-ER11-40L
	19	70	86	605001-000	SL20-ER11-70L
	22	40	64	605004-000	SL20-ER16M-40L
	22	70	94	605003-000	SL20-ER16M-70L
22	22	70	94	622001-000	SL22-ER16M-70L
	22	105	129	622002-000	SL22-ER16M-105L
25	35	80	107	606006-000	SL25-ER20-80L
25.4	22	40	64	6F1210-000	SL25.4-ER16M-40L
	22	70	94	6F1201-000	SL25.4-ER16M-70L
	22	105	129	6F1202-000	SL25.4-ER16M-105L
	35	70	97	6F1206-000	SL25.4-ER20-70L
	42	70	109	6F1207-000	SL25.4-ER25-70L
	42	80	119	6F1211-000	SL25.4-ER25-80L
	50	80	131	6F1208-000	SL25.4-ER32-80L

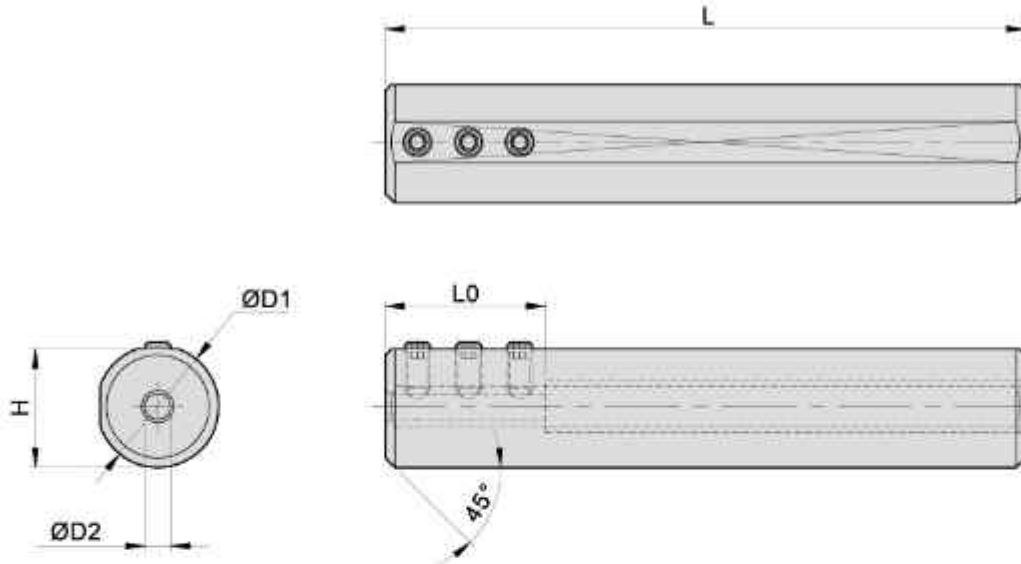
**SIDE LOCK STRAIGHT SHANK ER COLLET CHUCKS - SL SHANK**  
直柄側鎖式ER彈性筒夾刀柄-SL柄



**DIMENSIONS**

D1	D2	L1	L2	L3	Code No.	Order No.
16	17	80	17	17	616003-000	SL16-ER11Mx2-80L
19.05	19	53.5	16	16	6E1201-000	SL19.05-ER11x2-50L
	19	33.5	16	16	6E1207-000	SL19.05-ER11x2-30L
20	19	33.5	16	16	605006-000	SL20-ER11x2-30L
	19	40	16	16	605008-000	SL20-ER11x2-40L
	19	53.5	16	16	605002-000	SL20-ER11x2-50L
	19	60	16	16	605009-000	SL20-ER11x2-60L
	19	70	16	16	605007-000	SL20-ER11x2-70L
	19	70	19	19	622015-000	SL22-ER11Mx2-70L
22	22	70	24	24	622012-000	SL22-ER16Mx2-70L
	22	90	24	24	622013-000	SL22-ER16Mx2-90L
	22	97	24	24	622014-000	SL22-ER16Mx2-97L
25	28	60	24	24	606005-000	SL25-ER16Mx2-60L
25.4	28	60	24	24	6F1204-000	SL25.4-ER16Mx2-60L
	28	80	24	24	6F1205-000	SL25.4-ER16Mx2-80L
32	42	70	26	26	607007-000	SL32-ER25x2-70L
	42	98	26	26	607011-000	SL32-ER25x2-98L
40	42	88	27	27	608007-000	SL40-ER25x2-88L

**BORING HOLDER**  
搪刀柄



**DIMENSIONS**

D1	D2	L0	L	H	Code No.	Order No.
19.05	4	25	100	18.5	HE1140-000	H19.05-4-100
	6	35			HE1120-000	H19.05-6-100
	8	45			HE1010-000	H19.05-8-100
	10	50			HE1020-000	H19.05-10-100
	12	50			HE1030-000	H19.05-12-100
20	4	25		19.5	H05140-000	H20-4-100
	6	35			H05120-000	H20-6-100
	8	45			H05010-000	H20-8-100
	10	50			H05020-000	H20-10-100
	12	50			H05030-000	H20-12-100
22	4	25		21.5	H22140-000	H22-4-100
	6	35			H22120-000	H22-6-100
	8	45			H22010-000	H22-8-100
	10	50			H22020-000	H22-10-100
	12	50			H22030-000	H22-12-100
25.4	4	25	24.9	HF1140-000	H25.4-4-100	
	5	25		HF1150-000	H25.4-5-100	
	6	35		HF1120-000	H25.4-6-100	
	8	45		HF1010-000	H25.4-8-100	
	10	50		HF1020-000	H25.4-10-100	
	12	50		HF1030-000	H25.4-12-100	
	16	60		HF1040-000	H25.4-16-100	

